



THE OZONE
GROUP PHUKET

THE OZONE

CONDOMINIUM





THE OZONE CONDOMINIUM

Designed as an expansive living space and stunning unobstructed views in all directions that reflects the elegance of neighborhood surroundings. The Ozone Condominium, a modern luxury 8-story condominium comprises of 164 units. With 3 unit types, ranging from 1 Bedroom, 2 Bedrooms, and Duplex 2 Bedrooms featuring a seamless indoor-outdoor living experiences with full-height glass windows overlooking the Laguna Golf view, mountain view, and lush garden view, as well as granting plenty of natural light.





1 BEDROOM TYPE A
42 SQ.M.



1 BEDROOM TYPE B

51 SQ.M.



10150		
3100	4150	2900
1550	1550	



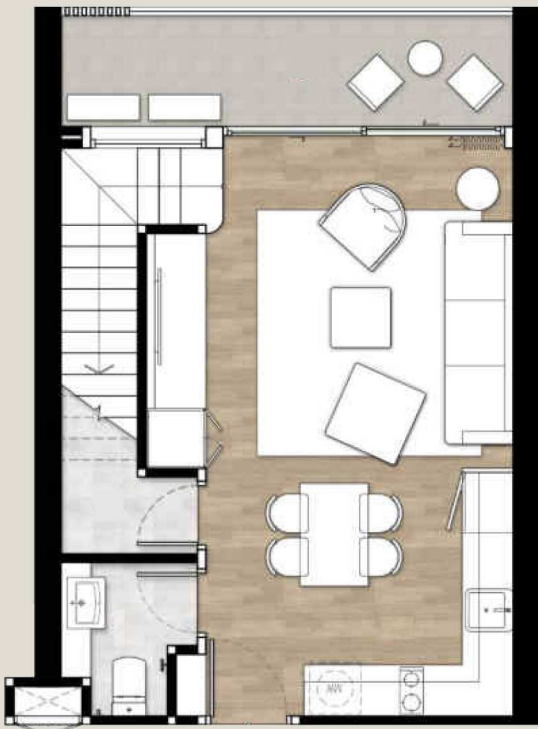
4250	3300		
750	2100	4300	1300
2775		5525	
8300			

2 BEDROOMS

88 SQ.M.



5300		
900	800	3450



1400	4000	8300
2900		

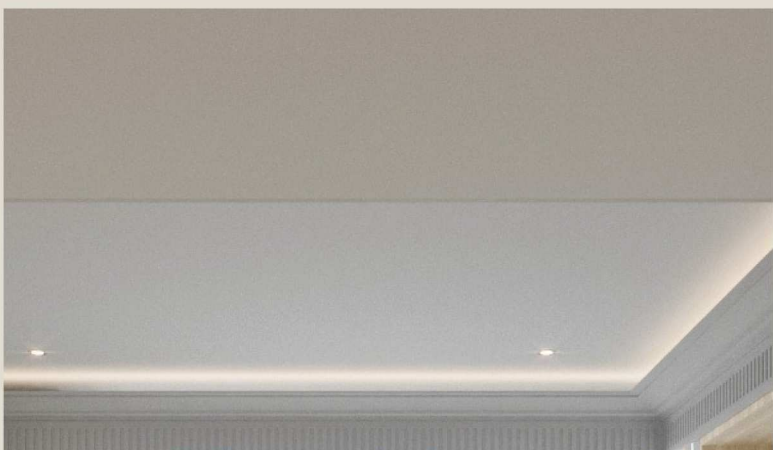
5300			
900	1550	2100	750



800	3750	7550
1700	1200	

DUPELX 2 BEDROOMS

85 - 88 SQ.M.





FACILITIES

Become a resident and enjoy exclusive leisure facilities at The Ozone Condominium. An expansive 5x24 meters plus 4x13 meters L-shape swimming pool and well-equipped fitness center allow residents to Stay Healthy while enjoying the greenery views.



THE MOST-SOUGHT-AFTER
LOCATION

Laguna Golf Course	1	k.m.
Boat Avenue Shopping Mall	1	k.m.
Central Porto De Phuket	2	k.m.
Bangtao Beach	2	k.m.
Layan Beach	2	k.m.
Blue Tree Waterpark	3.5	k.m.
Maya Beach Club	4	k.m.
Catch Beach Club	5	k.m.
Thanyapura Sport Center	10	k.m.
UWC International School	10	k.m.
Blue Canyon Golf Course	14	k.m.
Bumrungrad International Hospital Phuket	14	k.m.
Phuket International Airport	16	k.m.



Google Map

An ideal choice for those seeking a family home, a wise investment,
or a peaceful holiday escape that goes beyond the ordinary.



**THE OZONE
CONDOMINIUM**